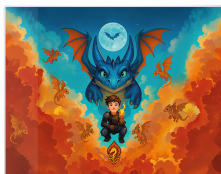


## Safety Instructions

Goldbuch desk pad Drachenfreund  
with item number: 75 168  
and EAN code: 4009835751688

is hereinafter referred to as the “product”.



### General

#### Read and keep the safety information!

Read the safety information carefully before using the product. The information is based on the standards and regulations applicable in the European Union. Also observe country-specific guidelines and laws abroad. Keep the information for future reference. If you pass on the product, be sure to hand over this safety information.

### Safety

#### Intended use

This product is intended exclusively for the intended use. Please use the product only in accordance with the general principles described in this document and in compliance with the general duties of care. Improper use, in particular use contrary to the intended purpose or in a manner that is obviously not in accordance with safe and sensible handling, may result in damage or hazards. The product is not a children's toy. The manufacturer accepts no liability for damage caused by improper use.

### Unpacking and checking

Remove the product from the packaging and check for damage. If this is the case, do not use it and contact your dealer. Make sure that children do not play with the packaging. They can get caught in it while playing and suffocate.

### Storage

Store the product in a clean, dry place away from light. Keep it away from sources of heat and ignition.

### Disposal

Dispose of the packaging according to type. Dispose of paper, cardboard and carton as waste paper, foil and any plastic parts via the appropriate recycling collection.

### Technical data

Outside material: Kunststoff  
Dimensions: ca. 49 x 38 x 0 cm  
Weight: ca. 0,3 kg

Manufacturer/Distributor:  
Goldbuch Georg Brückner GmbH  
Hallstadter Str. 50  
D-96052 Bamberg, Deutschland  
[www.goldbuch.de](http://www.goldbuch.de)  
[productsafety@goldbuch.de](mailto:productsafety@goldbuch.de)

WEEE-No.: DE 65043814  
Battery-Reg.-No.: DE 77833992